



## **BELT SANDER 75MM**



**TSBS003**

[www.thetoolshed.co.nz](http://www.thetoolshed.co.nz)

## TABLE OF CONTENTS

<b>Product Details</b> .....	<b>3</b>
<b>Specifications</b> .....	<b>4</b>
<b>Product Identification</b> .....	<b>5</b>
<b>Safety Guidelines</b> .....	<b>6</b>
<b>Assembly</b> .....	<b>9</b>
<b>Operation</b> .....	<b>10</b>
<b>Maintenance</b> .....	<b>11</b>
<b>Exploded Parts List</b> .....	<b>12</b>

### Thank You

For the purchase of this ToolShed product. We try our hardest to supply customers like you with the best quality products available, at the best price possible. We cant wait to continue working together in the future.

Please contact us for any servicing, replacement parts, or questions you might have about your ToolShed product by visiting our website, or calling: 0800 948 665.

## PRODUCT DETAILS

**Product Model**    ToolShed Belt Sander 75mm

**Product Code**    TSBS003

### DISTRIBUTED BY:



### Note:

This manual is for your reference only. Due to the continuous improvement of the ToolShed products, changes may be made at any time without obligation or notice.

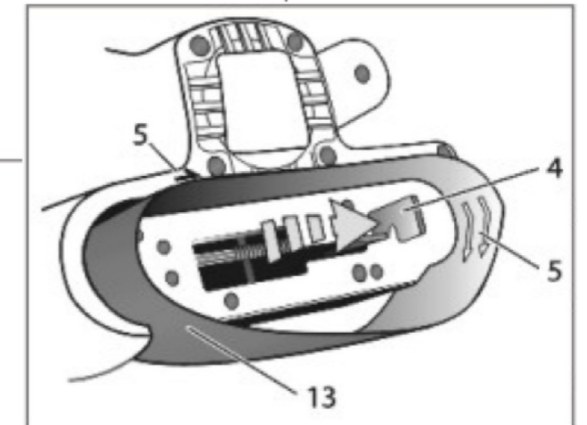
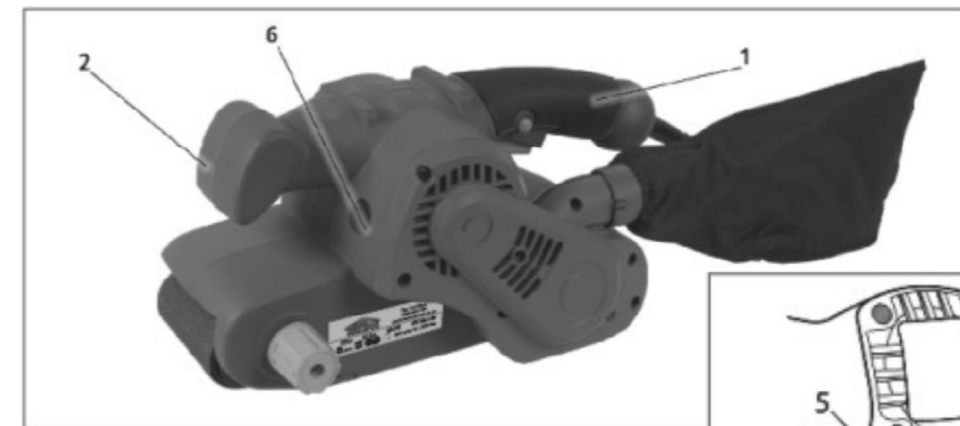
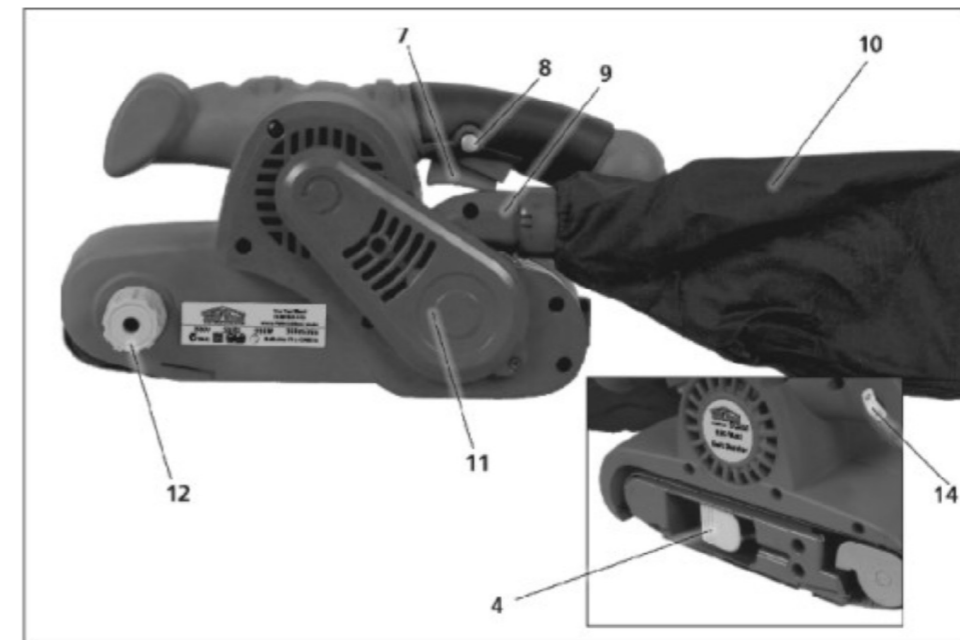
### Warranty:

This product may be covered under The ToolShed warranty. For more information, see our Terms & Conditions at [www.thetoolshed.co.nz](http://www.thetoolshed.co.nz)

## SPECIFICATIONS

<b>Voltage</b>	230 Volts
<b>Frequency</b>	50 Hertz
<b>Power Input</b>	950 Watts
<b>No Load Sandpaper Speed</b>	1200–380m/min
<b>Sanding Belt Size</b>	76 x 533mm
<b>Sanding Pad Size</b>	76 x 156mm
<b>Net Weight</b>	3.5kg
<b>Insulation Class</b>	Class II

## PRODUCT IDENTIFICATION



- |                              |  |
|------------------------------|--|
| <b>1</b> Rear Handle         | <b>8</b> Locking Button                  |
| <b>2</b> Front Handle        | <b>9</b> Adaptor for Dust Bag            |
| <b>3</b> Front Belt Roller   | <b>10</b> Dust Bag                       |
| <b>4</b> Tensioning Lever    | <b>11</b> Driving Belt Cover             |
| <b>5</b> Direction Indicator | <b>12</b> Adjusting Knob for Belt Travel |
| <b>6</b> Carbon Brush Holder | <b>13</b> Sanding Belt                   |
| <b>7</b> Operating Switch    | <b>14</b> Speed Controller               |

## SAFETY GUIDELINES



### WARNING

*READ ALL SAFETY WARNINGS & INSTRUCTIONS. Failure to follow instructions and warnings could lead to serious injury, electric shock, or fire.*

### Work Area Safety

- **Ensure that your work area is kept clean and well lit.** Lack of visibility and clutter greatly increase the risk of accident when using tools.
- **Keep bystanders, pets, and children clear when operating this power tool or machine.** They can cause distraction or risk injury to themselves.
- **Ensure you are not operating the power tool or machinery in the presence of dust, liquids, flammable gases, or anything that can create an explosive atmosphere.** Power tools and machinery can create sparks which can lead to ignition and fire hazards in working environments.

### Personal Safety

- **Always wear personal protective equipment (PPE).** Eye protection, ear protection, dust masks, and other protective equipment will help to reduce the risk of personal injury or long-term illnesses.
- **Dress appropriately. DO NOT wear loose clothing that can get caught in moving parts.** Keep hair, loose clothing, jewellery, and anything else that could be of risk, away

from moving parts in the machine, or they could become caught therein.

- **Always remain alert and DO NOT operate power tools or machinery under the influence of any substances such as alcohol or drugs, including prescription medications.** Lack of focus could lead to injury or accidents while operating these power tools and machinery.
- **Always ensure proper footing and balance.** Overreaching can lead to slipping and falling which can result in injury or accident.
- **Ensure the power switch is in the OFF position before connecting any battery, or power source to the power tool or machinery.** This can cause injury as tools and machinery can suddenly fire incidentally when live, causing accidents.
- **Use all provided dust collection and extraction attachments, if included.** This equipment, along with the use of PPE dust masks, can help keep you safe from dust, and keep your work site clear from hazards.
- **Ensure loose parts such as wrenches or adjusting keys are removed before starting the power tool or machinery.**

## SAFETY GUIDELINES

### Electrical Safety

- **DO NOT use the power tool or machinery in rainy conditions or wet areas where the power tool or machinery could get wet.** Water in this power tool or machinery can lead to electric shock.
- **Only use the power tool or machinery when the plug correctly matches the power outlet.** Modifying plugs greatly increases the risk of electric shock.
- **Keep the power cord away from anything that could damage it such as sharp edges, moving parts or heat.** A damaged power cord increases the risk of electric shock.
- **Only operate outdoors with the use of an outdoor extension lead.** Not all extension leads are suited to outdoor use and using one which is not can greatly increase the risk of electric shock.
- **Avoid body contact with grounded or earthed surfaces.** Surfaces such as radiators, ranges, pipes, and refrigerators can increase the risk of electric shock due to your body being earthed or grounded.
- **Never carry the power tool by the cord, or yank the cable from the power outlet.** This can damage the internal wiring and may become a hazard.

### Power Tool & Machinery Use & Care

- **Use the correct tool for the job.** Forcing a tool to do a job it was not designed for increases the risk of accident or injury.
- **Disconnect tools and machinery from power, or remove batteries before doing any maintenance or adjustments, or before storing the tools and machinery.** This reduces or removes the risk of a power connection that causes the tool or machinery to accidentally fire, which can help prevent injury or accident.
- **Check the general condition of the power tool for damage or any problems that could affect the way the tool or machine works.** An unrepaired tool or machine can lead to accident and injury. Only have your tool or machine repaired with genuine parts from The ToolShed.
- **Only use the power tool and machinery with genuine parts or accessories that are designed to be used with this power tool and machinery.** Failure to do so could result in accident or injury, or damage your tool or machinery.
- **Store your tool or machinery out of reach of children, and away from untrained personnel when not in use.** Use by somebody untrained, or a child, could lead to accident or serious injury.



### WARNING

*Electric shock can cause serious injury or, in some cases be fatal.*

## SAFETY GUIDELINES

### Service

- **Have your tools and machinery serviced at The ToolShed with ToolShed replacement parts.** This will ensure that the safety of the power tool or machine is maintained.

### WARNING

*The warnings and precautions discussed in this manual cannot cover all possible conditions and situations that may occur. It must be understood by the operator that common sense and caution are factors which cannot be built into this product, but must be supplied by the operator.*

### Always Use Common Sense

- It is not possible to cover every conceivable situation you can face. Always exercise care and use your common sense. If you get into a situation where you feel unsafe, stop and seek expert advice. Contact your dealer, service agent, or an experienced user. Do not attempt any task you feel unsure of!
- **Do not let familiarity gained from the frequent use of tools allow you to become complacent and ignore tool safety principles.** A careless action can cause severe injury within a fraction of a second.

### Sander Specific Safety

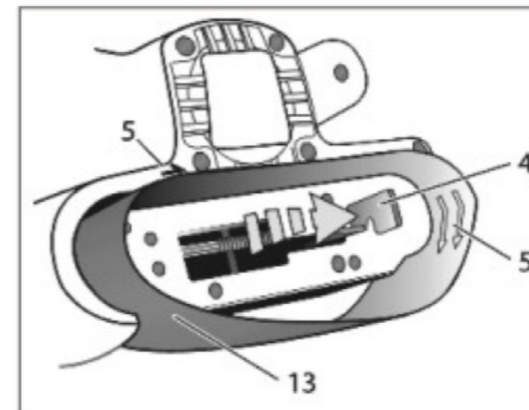
- Always remove the sander's plug from the socket before performing any work on the Sander (cleaning, changing sanding belts.)
- For the sake of your health, always wear adequate PPE gear, such as a dust mask and safety goggles, before you start sanding.
- Before you commence sanding, ensure you have adequate footing and an even floor surface so you do not slip during operation.
- It is best practice for the longevity of the machine to keep the sander clean at all times and check for damage before and after each use.
- If you discover any damage on the machine, consult the parts list and contact your nearest ToolShed distributor for assistance and replacement parts.
- Always empty the dust bag frequently (10–15 minutes) while sanding and never store or leave a sander without totally emptying its dust bag.
- Ventilate your work area adequately when you perform sanding operations.
- Make sure the belt is not contacting the workpiece before the switch is turned on.
- Keep hands and other body parts away from the rotating parts of the machine.
- Do not leave the tool running. Operate the tool only when hand-held.
- This sander is not suitable for wet sanding applications.
- Always keep the mains power cord away from the moving parts of this tool.

## ASSEMBLY

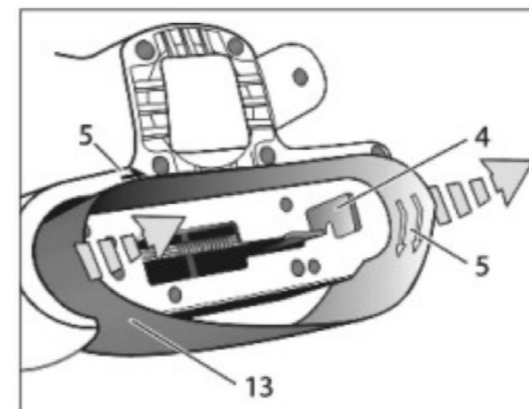
### Removing/Installing the Sanding Belt

### WARNING

*Before adjusting/removing the sanding belt, always ensure the tool is unplugged from the wall socket.*

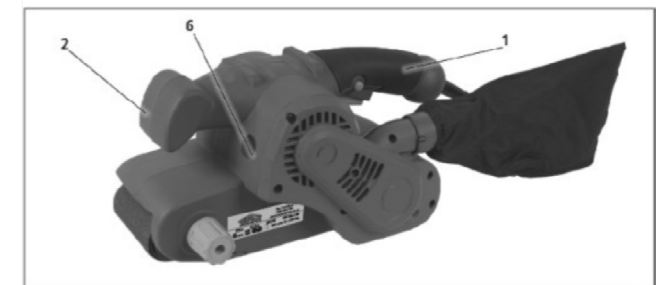
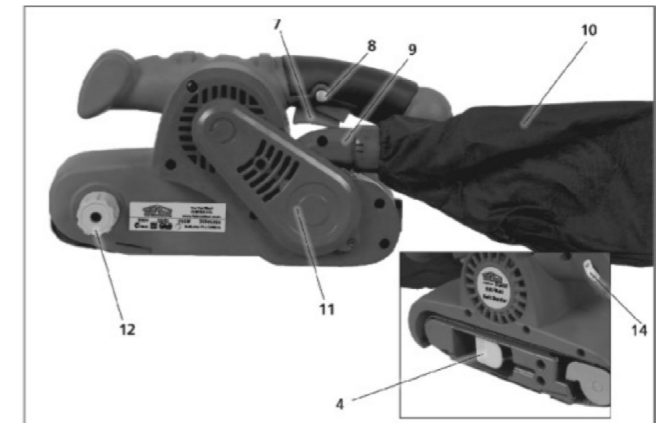


- Put the belt sander on its side, with the drive belt cover facing downwards.
- Loosen the sanding belt fastener (4).
- Remove the sanding belt from the machine.
- Put a new sanding belt on the machine, making sure that the direction arrows on the sanding belt are pointing in the same direction as the direction indicator (5).
- Fasten the sanding belt fastener again (4).



### Aligning the Sanding Belt

- If the sanding belt doesn't run parallel with the outer edge of the housing, the sanding belt must be aligned. Move the sanding belt in the correct position with the adjusting knob (12). By turning the adjusting knob clockwise, the sanding belt will move to the inside, and by turning the knob counter-clockwise, the sanding belt will move to the outside.



### Switching the Tool On & Off

- To turn the sander on, press the on/off switch.
- To turn the tool off, release the on/off switch.
- If continuous operation is required, the blocking switch (8) should be used:
- Switch the machine on by pressing the on/off switch.
- Press the blocking switch and release the on/off switch.
- To turn the tool off, press the on/off switch again to release the button.

## ASSEMBLY

### Mounting the Dustbag

- A complete dustbag fitted for the belt sander is included. Put the wire bracket (inside the dustbag) into the adaptor of the dust bag (when not mounted). The end of the bracket has to point upwards. Use the dust bag to collect dust which is released during sanding.
- Put the dust bag on the dust collection opening.
- Empty the dust bag regularly in order to obtain an efficient dust extraction.
- The adaptor of the dust bag can also be used to connect a vacuum cleaner to the machine.

### Insulated Grips

- The use of this belt sander is made easier because of the two grips on the front side and one on the back. Through this, you can hold the machine with two hands, so you have better control of the machine and there is less risk of coming in touch with the tools moving parts. Always hold and operate the belt sander with both hands.

## OPERATION



### WARNING

*Wear a dust mask. Exert extra care if sanding down painted surfaces. Some old paints may contain lead which is harmful to your health. If in doubt, seek specialist advice.*

### Choice of Sandpaper

- Coarser sandpaper (Grain 60) removes, in general, the bulk part of the material, whereas finer sandpaper is used for the finishings.
- If the surface is not even, then start with rough sandpaper. Then use middle coarse sandpaper (Grain 80) to remove the scratches left behind by the coarse sandpaper, and finally you take the fine sandpaper (Grain 120) for the final touches.

### Operating Instructions

- Ensure the machine has reached its full speed before touching the sandpaper to the work piece. This will prevent an overload of the machine.
- For sanding wood, place the machine approximately 15° off the grain of the wood. Move the belt sander continuously over the work piece, in a back and forth motion.
- Do not bend the sanding belts.
- Do not use the same sanding belt for sanding wood and metal.
- Do not apply too much pressure to the sander. This will only delay the sanding.

## MAINTENANCE

- Before cleaning or performing any maintenance, you must ensure the tool is switched off and disconnected from the power supply.
- Compressed air is the most effective way to clean this tool. Always wear PPE safety goggles when cleaning tools with compressed air.
- Check the carbon brushes of the machine in the event of excessive sparking.
- Ventilation openings and switch levers must be kept clean. DO NOT attempt to clean by inserting pointed objects through openings.
- Do not use harsh chemicals or solvents when cleaning this tool.
- If you discover any damaged or broken parts, consult your nearest ToolShed for replacements and advise.
- This sander has been designed to operate over a long period of time with minimum maintenance. Continuous satisfactory operation depends on proper tool care and regular cleaning.

### Cleaning

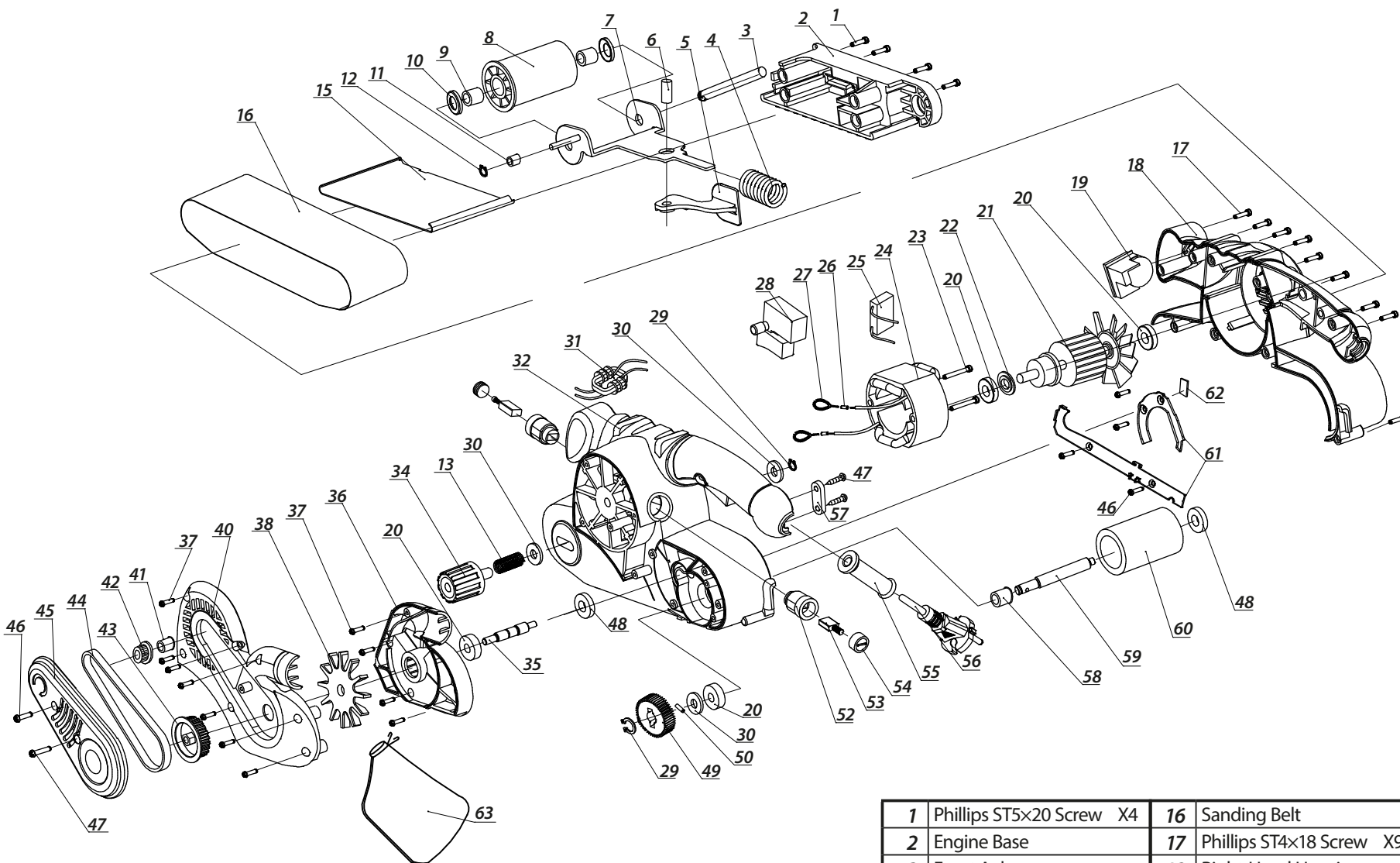
- Regularly clean the tool housing with a soft cloth, preferably after each use. Keep the ventilation slots free from dust and dirt. If the dirt does not come off, use a soft cloth moistened with soapy water. Never use solvents such as petrol, alcohol, ammonia water etc. These solvents may cause damage to plastic components.

### Faults

- Should a fault occur, please contact your nearest ToolShed for parts and advice. At the rear of this manual you will find an Exploded Parts View showing the parts that may be needed.

## TROUBLESHOOTING

FAULT	POSSIBLE CAUSE	SUGGESTED SOLUTION
<i>The Electro Motor gets Hot</i>	The cool ventilation slots in the motor are blocked with dirt or dust	Clean the cool ventilation slots.
	The motor is defective	Contact your nearest ToolShed.
<i>The Plugged In Machine Does Not Work</i>	Interruption in the mains connection	Check the mains connection for any fracture.
<i>The Dust Extraction Doesn't Work</i>	This can be caused by a blocked up dust extraction	Clean the dust extraction bag and port.



# TSBS003 EXPLODED VIEW & PARTS LIST

1	Phillips ST5×20 Screw X4	16	Sanding Belt	49	Big Gear
2	Engine Base	17	Phillips ST4×18 Screw X9	50	Cylindrical Pin
3	Front Axle	18	Right-Hand Housing	52	Brush Holder X2
4	Front Wheel Frame Spring	19	Governor	53	Carbon Brush
5	Front Rack Wrench	20	Bearing X4	54	Brush Holder Cover X2
6	Rivets 6×15	21	Rotor	55	Cable Sheath
7	Front Wheel Frame	22	Creepage Stop Ring	56	Power Cable
8	Front Wheel	23	Phillips ST5×50 Screw X2	57	Pressure Plate
9	Needle Roller Bearing X2	24	Stator	58	Steel Sleeve
10	Bowl Gasket X2	25	Capacitor	59	Rear Axle
11	Limit Steel Sleeve	26	Wiring Copper Tube X8	60	Rear Wheel
12	Snap Ring Ø10	27	Tension Spring X2	61	Protect Bar
13	Regulating Spring	28	Switch	62	Ceramic Chip
15	Iron Base Plate	29	Snap Ring Ø6 X2	63	Dust Bag
30	Flat Washer X3				
31	Inductor				
32	Left-Hand Housing				
34	Adjusting Knob				
35	Pinion				
36	Gear Box Cover				
37	Phillips ST4×12 Screw X11				
38	Dust Exhaust Fan Blade				
40	Middle Cover				
41	Steel Sleeve				
42	Small Pulley				
43	Big Pulley				
44	Belt				
45	Belt Cover				
46	Phillips ST4×12 Screw X5				
47	Phillips ST4×16 Screw X3				
48	Bearing X2				